

CO-ODINATED GLOBAL LAND DATA GENERATION: RESPONSIBLE LAND GOVERNANCE



WORLD BANK GROUP

Kathrine Kelm
Global Land and Geospatial Unit

Responsible Land Governance:

“...policies, procedures, institutions for decision making with accountability and transparency”

An Evidence-Based Approach



Land and Poverty Conference 2017 themes:

1. Research on land governance and rigorous impact evaluations
2. Delivering land administration services at scale
3. Harnessing geospatial data, cloud platforms, and other data technologies
4. Land and urbanization
5. Land for infrastructure, investment, disaster risk reduction
6. Securing land rights for equity, sustainability, and resilience



Where do the Data come from? How can we compare (countries, sectors, themes) ?

1. Doing Business: Registering Property
2. The Land Governance Assessment Framework (LGAF)
Participatory self-assessment by country level experts



The Land Governance Assessment Framework

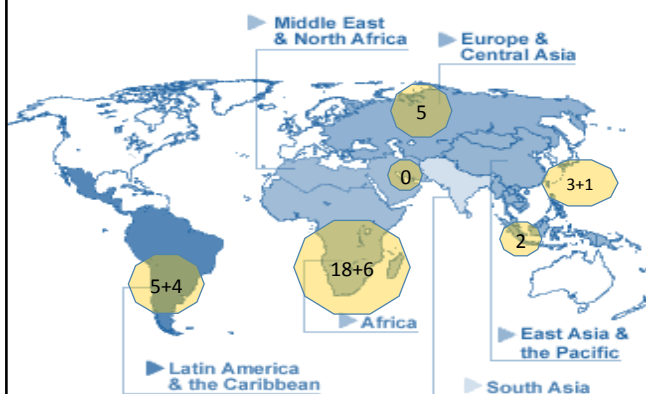
Panel 1	Land Tenure Recognition
Panel 2	Rights to Forest and Common Lands; Rural Land Use Regulations
Panel 3	Urban Land Use, Planning, and Development
Panel 4	Public Land Management
Panel 5	Process for transfer of Public Land to Private Use (LSLBI)
Panel 6	Public Provision of Land Information (registries)
Panel 7	Land Valuation and Taxation
Panel 8	Dispute Resolution
Panel 9	Review of Institutional Arrangements and Policies

2

In partnership with FAO, IFAD and UN-Habitat



LGAFs in 44 countries (completed and on-going)



Africa Region:

- Burkina Faso
- Burundi
- Cameroon
- Cote d'Ivoire
- Democratic Republic of Congo
- Ethiopia
- Gambia
- Ghana
- Guinea
- Kenya
- Madagascar
- Malawi
- Mali
- Mauritania
- Mozambique (ongoing)
- Nigeria
- Rwanda
- Senegal
- Sierra Leone
- South Africa
- South Sudan
- Tanzania
- Uganda
- Zambia

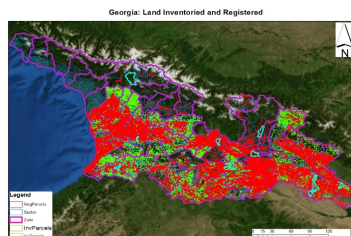
LGAF: Land Governance Monitoring

System for collecting, storing and publishing data and indicators on land governance.

Base Characteristics

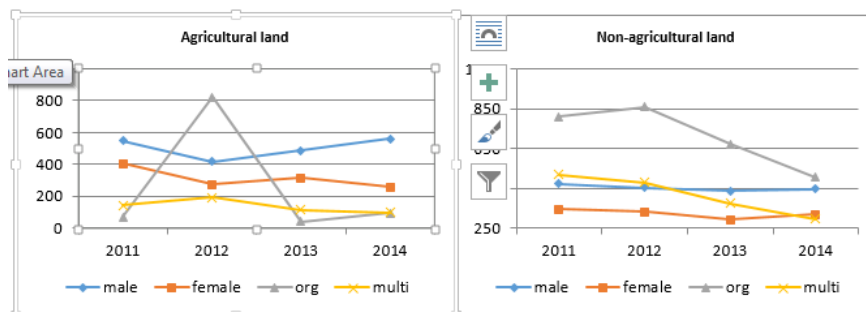
- The number (and prices) of **registered transactions**
- Receipts of **land tax revenue**
- The **share of registered/mapped** communal, private, and state land
- Cases of **expropriation and privatization**
- The number of land-related **conflicts in the courts**
- Share of **registered/mapped in women's, men's name and in joint ownership** for agricultural/residential land and real estate

Numerous practical issues of data access, data quality and availability



Georgia: Land Monitoring System Growth and Trends 2011-2014

Figure 6 - Number of First Time Registrations by Gender and Owner Type



Tax Revenue

Figure 9 - Tax Revenue for Agricultural Land

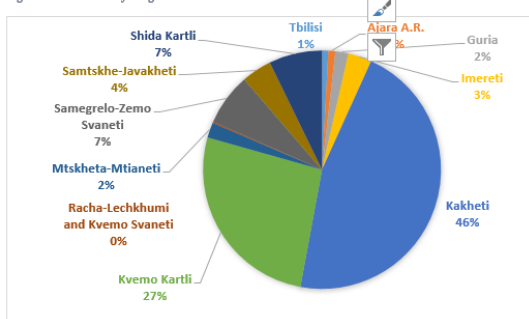
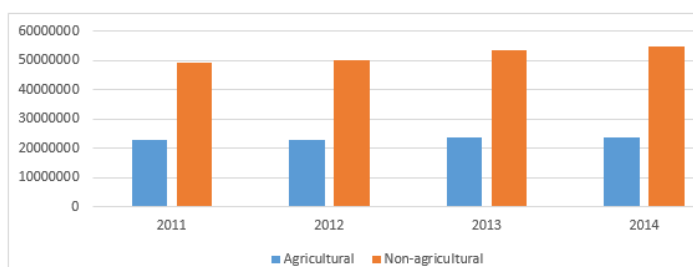


Figure 11 - Tax Revenue by Type of Land



Court Cases

Figure 16 - Total Number of Administrative and Civil Cases (2011-2014)

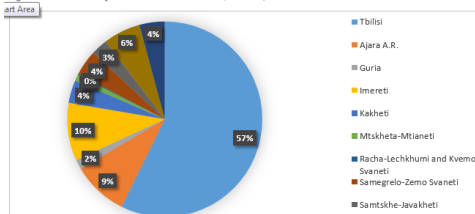
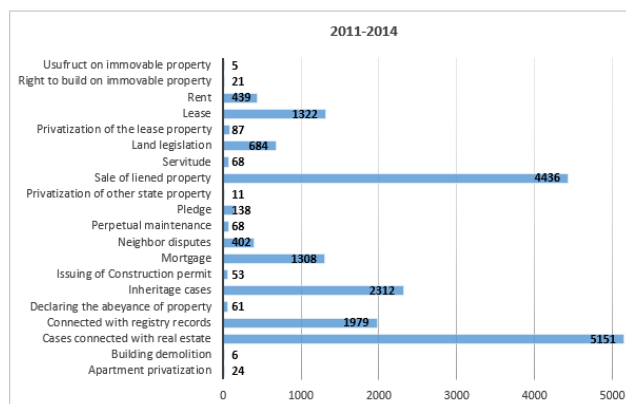


Figure 19 - Cases by Sub-Categories



World Bank Use

- Project preparation (Moldova, Indonesia)
- Input to the Systematic Country Diagnostics for countries
 - *Inform World Bank country portfolio*: availability of geo info for projects, avoidance of duplication
 - *Inform governments on strategic investments*: create a strategic action plan for NSDI and its application to national policy priorities
 - Provide a *socio-economic business case* for investment in SDI

Beyond the World Bank?

**Formalize into a global indicator of SDI readiness/ geo-maturity?
(à la Doing Business)**

Partnership with other organizations to roll out globally e.g. UN-GGIM?

Thank you!

